

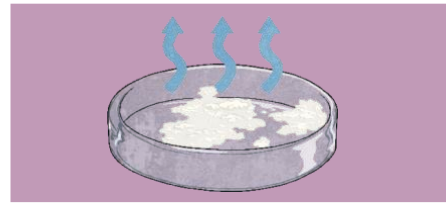
Year 5 Science homework – Irreversible Changes

Kitchen Creations

The heat causes an irreversible chemical change to occur.

The cooked egg cannot be cooled and turned back into a raw egg. It is a chemical change because a new product has been made, and irreversible because it cannot be changed back.

Melting, freezing, evaporating, condensing and dissolving are examples of reversible physical changes.



These are physical changes because no new materials are created. They are reversible changes because they can be changed back or reversed.

Your challenge

Looks at the pictures on the next sheet.

Decide whether they are a reversible or an irreversible change

Reversible change	Irreversible change

Chocolate Melting	Bread Toasting	Candle Burning	Wax Melting
			
Sugar Dissolving	Wood Burning	Biscuits Baking	Water Boiling
			
Puddle Evaporating	Water Condensing	Butter Melting	Potatoes Boiling
			
Ice Melting	Oil and Water Mixing	Milk and Vinegar Mixing	Cakes Baking
			