

## Class 11 Maths

### Mental Arithmetic:

In order to help you with all of your maths learning, it is important that you are practising your times tables regularly. If you have good times tables knowledge, you will be able to apply this to other areas of mathematics.

Remember to go on to Times Tables Rockstars regularly:

<https://play.ttrockstars.com/auth>

Your login is the same as the one you use in school.

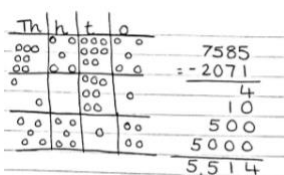
Numberbots also uses the same login as TTRockstars. See the link below:

<https://play.numberbots.com/#/account/search-school>

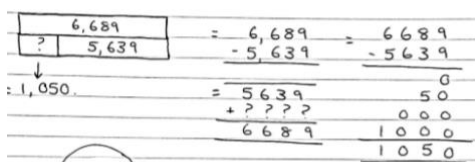
### Subtraction:

This week you will practise using the subtraction methods used in school. You are going to use place value diagrams, bar models, part whole models and the written vertical method for subtraction.

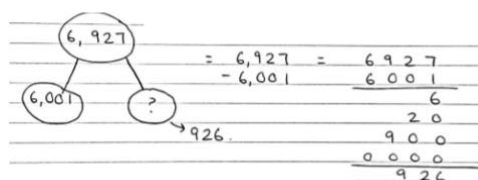
I have given you an example of how to answer each style of question and then you can attempt the questions below:



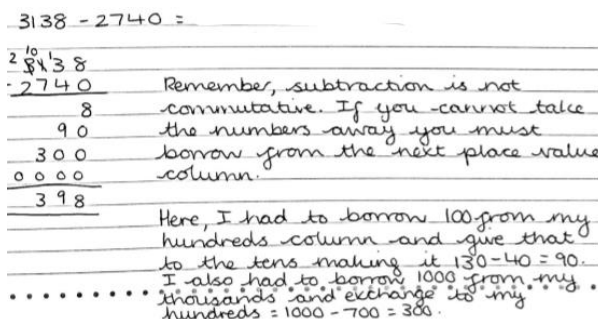
Place value diagram



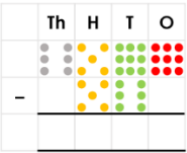
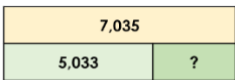
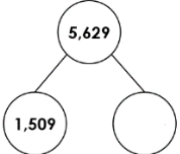

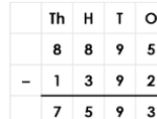
Bar model



Part-whole model



Formal written method

Subtraction- Place value counters	Subtraction- Bar model	Subtraction- part-whole models	Subtraction- written formal method	Subtraction- True or false?
<p>Use the place value diagram to help you to calculate the following:</p> <p>1) </p> <p>2) 5788-2266=            3) 5569-1136=            4) 8758-3147=            5) 6866-4524=            6) 4523-1012=</p>	<p>Draw and complete a bar model to show the following:</p> <p>1) </p> <p>2) 8559-5317=            3) 6859-3431=            4) 9665-7251=            5) 5788-2266=            6) 5569-1136=</p> <p><i>Remember, your largest number will be your total at the top.</i></p>	<p>Calculate the missing number in the following:</p> <p>1) </p> <p>2) 9695- ? = 1327            3) 5796 - ? = 4153            4) 8758 - ? = 7145            5) 8695 - ? = 7263</p> <p><i>Think about how you use the model to help you find the missing number.</i></p>	<p>Use the method shown above to calculate these more difficult calculations. You may need to borrow and exchange:</p> <p>1) 7106-4215=            2) 6106-1826=            3) 6958-1340=            4) 6172-4259=            5) 6929-1158=            6) 5852-5537=</p>	<p>Use the formal written method shown above to calculate whether the following are true or false and explain why??</p> <p>1) </p> <p>2) </p>

**Extension:**

If you complete all of these calculations, you can have a go at these word problems:

*Hint: for some of these questions, you may need to add and subtract to find the answer.*

- 1) There were 3,647 books in the school library. All of the classes came and took 1,856 away. How many books were left in the school library?
- 2) A lorry driver has a 3,472 km journey. He travels 2,841 km and then takes a break. How much further does he have to travel to reach his destination?
- 3) Abi collects stamps. She has 2,968 in her collection. She gives 1,052 away to her friend who also collects stamps. How many does Abi have left?
- 4) There were 9,852 pieces of sports equipment in school. Sadly, 2,329 pieces were lost or broken. The school then bought 3,650 more pieces of equipment. How many pieces of sport equipment are there now?

Create a word problem for the following calculations:

- a)  $9654 - 1324 =$
- b)  $4862 - 1546 =$
- c)  $3000 + 1000 - 1500 =$
- d)  $6342 - 1521 + 742 =$

Can you work out the answers?